

1933-34

Luther College of Regina

For Young Men and Women

LUTHER COLLEGE OF REGINA

1933—1934

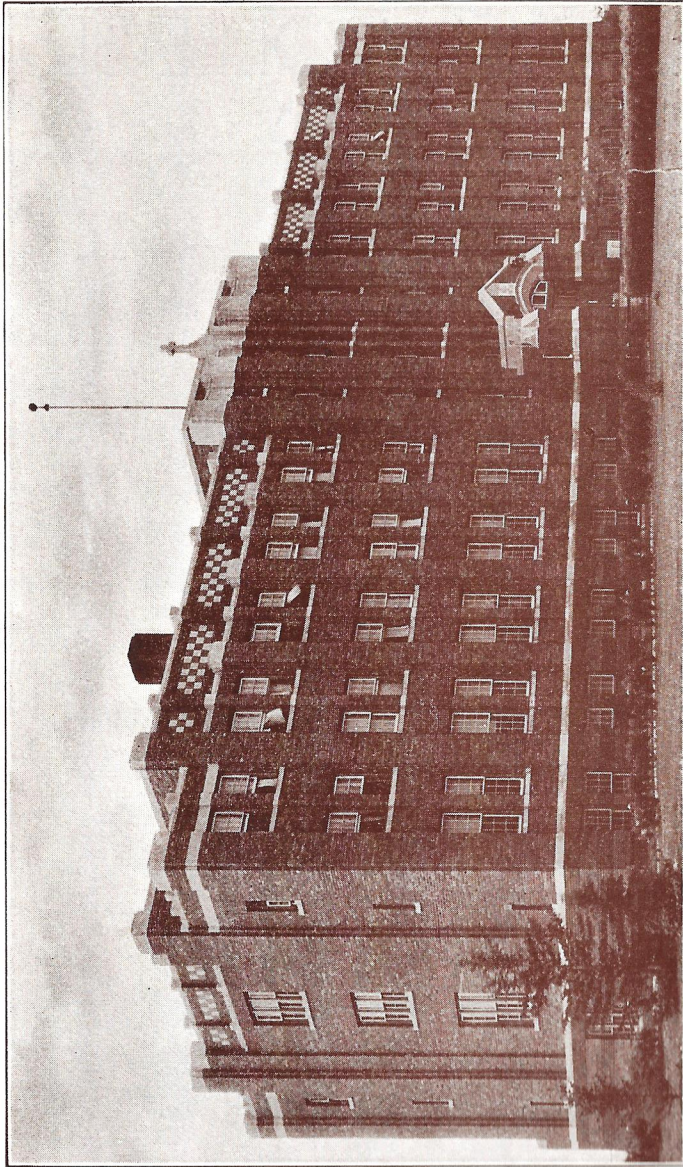


High School --- Preparing students for Junior
and Senior Matriculation.

University --- Including Second Year of Univer-
sity, Arts and Science.

Dewdney Avenue and Royal Street
Regina, Saskatchewan

SESSION OPENS SEPTEMBER 20, 1933



LUTHER COLLEGE OF REGINA

Calendar

ACADEMIC DEPARTMENT

1933

September 20.....	Fall term begins.
November 11.....	Thanksgiving Holiday.
December 18, 19, 20.....	Winter Examinations.
December 21.....	Christmas Holidays begin.

1934

January 4.....	Recitations resumed.
March 26, 27, 28.....	Spring Examinations.
March 29.....	Easter Holidays begin.
April 4.....	Recitations resumed.
May 10.....	Ascension Day.
May 24.....	Victoria Day.
June 20.....	Departmental Examinations begin.

MUSIC DEPARTMENT

1933—1934

September 5.....	Non-academic students.
September 25.....	Academic students.

BOARD OF REGENTS

		Term Expires
Rev. H. Kroeger, <i>Chairman</i>	Regina, Sask.	1934
Rev. A. Fricke, <i>Secretary</i>	Yellow Grass, Sask.	1936
Rev. Karl Schmidt	Strasbourg, Sask.	1936
Mr. O. Fuhrmann	Regina, Sask.	1934
Mr. Ph. Gross	Earl Grey, Sask.	1936
Rev. J. Fritz, (<i>advisory</i>)	Regina, Sask.	1934
President C. C. Hein, <i>ex-officio</i>	Columbus, Ohio.	

BOARD OF EDUCATION

American Lutheran Church

Rev. H. J. Shuh, D.D., <i>Chairman</i> 1938	Prof. R. Kraushaar,	1936
Rev. John Becker..... 1938	Rev. C. H. Graening.....	1936
Rev. N. A. Menter.....	1934	

Faculty

1933—1934

Rev. Rex Schneider, B.A., M.A.
Director of the College

ACADEMIC DEPARTMENT

Rev. H. Schmidt, B.A.	<i>Classics, German, Religious Education, Registrar.</i>
Rev. L. Pflueger, B.A.	<i>Mathematics, Treasurer.</i>
C. E. Behrens, Ph.B.	<i>Physics, Mathematics.</i>
William Asman, B.A., M.A.	<i>English, Physical Education.</i>
Adelaide, A. Denef, B.A.	<i>History, French, Dean of Women.</i>
Emilie Walter.....	<i>Dean of Women.</i>
Paul Liefeld, B.Sc.	<i>Chemistry, Biology.</i>
Alvin, Fritz, B.A., M.A.	<i>Languages, Dean of Men.</i>

MUSIC DEPARTMENT

Frances England, A.T.C.M.	<i>Piano.</i>
Bernice Winder, A.T.C.M.	<i>Violin.</i>

College Pastor

Rev. H. Schmidt.

College Physician

E. K. Sauer, B.A., M.D.

Location

Luther College of Regina is situated on West Dewdney Avenue on the corner of Dewdney and Royal Streets. The school is easily reached from the downtown districts by the Dewdney Avenue and Broad Street car line.

Sanitation

All modern improvements and sanitation insure the health and comforts of the pupils. The plumbing is modern and is planned upon a scientific basis. The Dunham Heating System is used and it insures comfort in even the coldest weather.

Equipment

The equipment in every department has been carefully chosen on the basis of hygiene, comfort, and practical usage. The classrooms are furnished with the latest type of removable furniture. In both the boys' and girls' residences the modern dormitory accommodations appeal to the parents who wish to send their son or daughter to a higher school of learning.

Aims and Purposes

Luther College of Regina is supported by, and under the control of, the American Lutheran Church.

The foremost aim of Luther College is to develop Christian character in its students, young men and women. It also purposes to determine and find out the interests and aptitudes of the students so that they can be wisely directed by means of material worth while. In order to do this individual attention is given to each student, guiding him in his study along the lines for which he is best fitted.

At Luther College no attempt is made to offer many curricula. At the present time two are available: the general, and the university and seminary preparatory. The former prepares the pupils as

richly as possible to carry on in careers other than university or seminary; the latter is adapted to the requirements of specified universities and seminaries, and of the Provincial Junior and Senior Matriculation Examinations. The plan of instruction covers grade nine to second year university inclusive. The first and second years of university work are affiliated with the University of Saskatchewan.

The Department of Education of Saskatchewan has inspected the modern school plant, the work that is offered and done, the modern equipment and good accommodations, and has given a very favorable report. The University of Saskatchewan has awarded us the privilege of appointing annually one of our students for a University Scholarship.

Discipline

The government of the school seeks to appeal to the pupils' sense of honor, and to develop in them the spirit of self-control. It seeks to foster between teachers and pupils that fine personal relationship which results in perfect understanding and a beautiful unsuspecting confidence.

There are few set rules of behavior in the school but there is a recognition of the value of discipline, and at all times obedience, courtesy, and sportsman-like conduct are required of the pupils. The school instills in its pupils respect for the rights of others and a desire to serve and promote the best interests of the group to which they belong.

School Organization

High School—preparing students for Junior and Senior Matriculation.

University—including Second Year University Arts and Sciences, under the direction and supervision of the University of Saskatchewan.

OUTLINE OF COURSES

1. HIGH SCHOOL

Refer to Regulations and Courses of Study for Secondary Schools of Saskatchewan for description.

FORM IX

- English.
- Mathematics—arithmetic; algebra; geometry.
- History and civics.
- Science.
- Health Education.
- Either music, German, Latin or French.
- Religion.

FORM X

- English.
- Mathematics—geometry; algebra.
- History.
- Geography.
- Science.
- Health Education.
- Either music, German, Latin, French.
- Religion.

FORM XI

- *English.
- *History.
- *Mathematics—algebra; geometry.
- Religion.
- *Three of the following, *one* of which shall be physics, or chemistry: physics, chemistry, Latin, German, Greek, French.

2. JUNIOR COLLEGE—(First and second year University.)

First Year—(FORM XII)

*English.

*Mathematics—algebra; geometry; trigonometry.

*History.

Religion.

*Three of the following, *one* of which shall be physics, chemistry or biology: physics, chemistry, biology, Latin, German, Greek, French.

Second Year University

In affiliation with the University of Saskatchewan

English 2.

German 2.

Latin 2, Greek A, French 2, German A.

Analytical Geometry and Calculus 6.

Psychology 1.

Religion.

Chemistry 1A.

Chemistry 1B.

Physics 1B.

*Matriculation examination given by the Department of Education in these subjects.

SECOND YEAR UNIVERSITY

Description of Courses

Affiliated with University of Saskatchewan

English 2. History of literature; work in composition; literature selections chosen in accordance with the requirements of the University. Five periods. Mr. Asman.

German 2. The eighteenth century development in German literature. Lessing, Goethe, Schiller. Lectures, discussions, reports, class and outside reading. Lessing, Minna von Barnhelm and Nathan der Weise; Goethe, Goetz von Berlichingen, Faust I., Iphigenie in Tauris; Schiller, Kabale und Liebe and Maria Stuart. Three hours per week. Mr. Schmidt.



THE LIBRARY

Latin 2. The course is that prescribed by the University of Saskatchewan. Livy XXI and XXII, Latin Poets, Selections from Ennius to Martial. Three hours per week. Mr. Schmidt.

Greek A. The course is that prescribed by the University of Saskatchewan. Three hours. Mr. Schmidt.

French 2. Prose: Grammar and composition (text prescribed), History of French Literature of the 17th, 18th and 19th centuries and their representative authors. Same as French 2 of University of Saskatchewan. Three hours. Miss Denef.

Mathematics 6. Introduction to the Calculus. Corresponds to Math. 6 of University of Saskatchewan calendar. Three hours. Text: Longley and Wilson, "An Introduction to the Calculus." Mr. Behrens.

General Chemistry 1A. Lectures, three hours a week; laboratory six hours.

This class requires no preliminary chemical training for admission. It aims to teach the fundamental principles of chemistry through the experimental study of the more important elements

and their compounds and thus lay the foundation for the study of chemistry. The latter part of the course is devoted to the application of the Ionic Theory to Qualitative Analysis. Corresponds to Chemistry 1A of University of Saskatchewan. Mr. Liefeld.

Inorganic Chemistry 1B. Lectures, three hours a week; laboratory six hours.

This class is designed for students who have passed senior matriculation chemistry. The lectures and laboratory of the first term are devoted to the quantitative study of the fundamental laws of chemistry. The lectures of the second term deal with the theory of electrolytic dissociation and its application to qualitative analysis, the laboratory work leading up to and including systematic analysis of unknown substances. Texts: *Inorganic Chemistry* by Partington, and *Elementary Qualitative Analysis* by Engelder. Corresponds to Chemistry 1B of University of Saskatchewan. Mr. Liefeld.

Physics 1B.—A general college course for students who offer Grade XII Physics for matriculation. It corresponds to the Physics 1B offered by the University of Saskatchewan. It is considered as meeting the needs of students preparing for courses in Medicine or Dentistry, and as sufficient preparation for the more advanced courses in physics. Text: *Houstoun, "Intermediate Physics."* 3 hours lecture, 6 hours laboratory per week. Mr. Behrens.

Psychology 1. Corresponds to Philosophy 1 of the University of Saskatchewan. Three hours. Mr. Schneider.

Religion 2. This course follows the same outline as that of Form XII more intensively and extensively. German and English sections. Four periods. Mr. Schneider.

Examinations

At the end of each of the five terms in the school year final examinations in all departments are set and given by the College Staff, the grades of which are mailed to the parents and guardians of the pupils. Frequent tests are conducted in each class. Upon the merits of these grade pupils are recommended to the Department of Education of Saskatchewan for examination into the higher grades.

The Departmental Examinations are given by the Department of Education of the Province of Saskatchewan, for Grades eleven and twelve. The University Examinations are under the supervision of the University of Saskatchewan.

For Forms nine and ten the Standard Tests are provided by the Department of Education.



LUTHER COLLEGE BAND

Music

The Conservatory.—One of the chief objects of the work in music in this school is the cultivation of a love for music, pleasure in its skilful performance, and an appreciation of good music. We try to establish high standards and a critical attitude on the part of each pupil. This can best be accomplished by the use of material which is of a high musical value and within the understanding of the pupil.

Private instruction is given in all departments under competent teachers who use the sound teaching methods and aim to give the pupil, whether a beginner or an advanced student, a background of theory, sight-reading, and ear-training, together with the practical application on the instrument, whatever it may be.

One of the requisites of the Department is the theory course which must be taken by all students registering in the Music Conservatory.

There will be recitals given every month. Every student must appear before the public at least once every two months. This arrangement is beneficial to the pupil in so far as it not only insures constant practice from him, but it also gives him an opportunity to gain confidence in himself by appearing before the public often.

Any male student studying for the Holy Ministry has at his disposal two years of free piano instruction. However, the fees will be collected from this student during the entire period of registration in this Department with the agreement that these same fees may be collected from the College by the student at the end of his graduation from the Seminary.

College Organizations

A school orchestra, chorus, band and glee clubs provide means for expression of musical ability and every pupil is urged to participate and will be helped to develop to his fullest capacity.

Physical Education and Health Education

The physical education department meets three needs: (1) hygienic, it corrects postural defects and stimulates the organs to function more efficiently; (2) educational, teaches muscular control and co-ordination; (3) recreational, provides enjoyment through physical activity.

Due to the fact that the College must wait for its new gymnasium, arrangements have been made with the Y.W.C.A. and the Y.M.C.A. for the use of gymnasiums and swimming pools for the boys and girls. Every student is required to take advantage of these opportunities for physical exercise.

The out-of-door equipment includes a rugby field, hockey rink, two well-drained shale tennis courts, basket ball court, both hard and soft-ball baseball diamonds, and cinder track.

Competitive teams are organized for interscholastic competition in the following sports: rugby, ice hockey, track, hard and soft-ball baseball. Every one in the school has an opportunity to enter into some form of competition. Those who do not take part in varsity competition have an opportunity to compete in intramural sports and the cadet corps.

The school physician makes a careful examination of all pupils at the beginning of each year, data of which are kept on file in the principal's office. This information is valuable not only to the authorities of the school but it is helpful to the pupil in detecting his physical defects, so that they may be duly checked and corrected.

Rules and Regulations

(a) *General*.—Parents are requested to have their children postpone all evening engagements until Friday and Saturday nights.

It is undesirable to have pupils called from class duties to the telephone. Patrons are requested to leave phone numbers at the office.

No appointments must be allowed to interfere with the regular school programme.

Physical education is required. Pupils are carefully examined by the school physician.

While there is no official uniform adopted by school, pupils are requested to dress simply and neatly.

An out-of-town resident student may spend only one week end per month at his or her home.

Under no consideration may a student entertain guests over night in the dormitories unless special permission is given by the Principal or Dean.

All students are requested to be vaccinated by some local physician for small-pox, scarlet fever and diphtheria before registration in the fall.

(b) *Girls' Residence*.—The rules and regulations governing the girl's residence are few and simple, such as would exist in a well-ordered Christian home.



A ROOM IN THE GIRLS' RESIDENCE

Each student will provide herself with the following articles: Laundry bag, pillow, four sheets, three pillow slips, two blankets, comforter, white spread for single bed, two hand towels, two bath towels, drinking glass, tooth brush, hair brush and comb, kimona, bedroom slippers, rubbers, gymnasium suit. Rugs, cushions, and pictures are optional. Each student is required to keep her room clean and tidy. Laundry soap and scrubbing cloths must be provided by each student.

Leave:—Students desiring to leave the College grounds at any time must ask permission of the Dean. Those going out must sign the Leave Book in full and record the time of their return as directed. Any girl leaving the College grounds without proper permission is liable to suspension.

Students will be granted visiting privileges to the homes of friends whose names appear on their visiting lists on Friday evening, Saturday afternoon, and Sunday afternoon. Students under twenty-one years of age must be called for by the hostess or someone representing her and be brought back at the proper time by an approved chaperon, who will see the teacher in charge.

Each student will submit to the Dean a visiting list compiled by the parents or guardian.

Callers may be received from 4 to 5 p.m. from Monday to Friday inclusive, from 2 to 5 p.m. on Saturday afternoon and from 3 to 5 p.m. on Sunday afternoon. Permission will not be granted to any student to attend a dance while in attendance at the College.

(c) *Boys' Residence.*—The rules governing the Boys' Residence are such as are conducive to the well-being and efficiency of students and College.

Each student is required to keep his room clean and tidy. Beds must be made before 8 a.m.

Requests for rooms are filed in order of application. We urge early application on account of the limited accommodation.

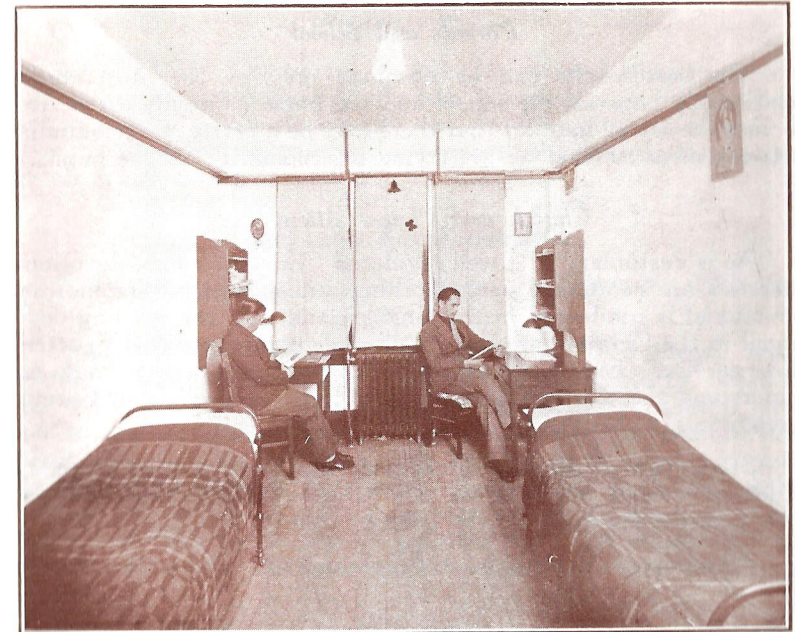
The rooms are furnished with the exception of bed-clothes, linen, and towels, which the student furnishes. Bed-clothes and linen may be rented from the College at \$6.00 per school year.

Study hours, five nights per week.

No permission will be given to students to attend dances.

Students under 18 years are not permitted to use tobacco.

The use of intoxicating drinks is positively forbidden.



A ROOM IN THE BOYS' RESIDENCE

Attendance

Patrons are urged to let nothing interfere with the student's regular attendance. A private school of high reputation cannot compromise its standard by allowing pupils who are frequently absent, credit equal to that gained by pupils in regular attendance. All pupils must be treated alike in this respect. Wherever absences are unavoidable and prolonged the student must satisfy requirements by tutoring or by delayed promotion until the necessary standard of work has been attained. For absence and early dismissal a written excuse must be presented by the pupil.

Supervised Study

For the purpose of training students in better study habits this feature has been added to the curriculum. To cultivate proper study habits in its students is one of the prime duties of a school.

Students are assigned to these classes on the advice of members of the staff, although the privilege of attending is extended to all students. These classes are conducted five nights a week from 7.30 to 10 o'clock.

Parents and School

The best results can be obtained only by the most cordial relationship between the school and the home. Parents are invited to visit the school in order that there may be a perfect understanding between us as to what we are trying to accomplish for the pupils.

Church and Chapel Attendance

As is customary in a well regulated Christian home, devotional exercises are conducted each morning and evening. The morning devotional is conducted in the English language, the evening devotional in the German language. All students are required to attend these services. Exceptions are made only when students who do not understand the German language ask to be excused from German devotionals.

Students must attend church services at least once every Sunday. Students attend the College Lutheran church unless different arrangements are made by the parents with the Principal.

All students are required to take courses in religious instruction.

Office Hours

The Principal will be glad to meet parents from 11.00 to 12.00 in the morning or by appointment to discuss the work of the school. Any conferences with the principal or teachers will be arranged through the office of the school.

Publications

There is a paper, *The Luther Canadian*, produced by the students of the entire school under the direction of the faculty advisor, who is an instructor in the English department. This publication is issued three times a year, at Christmas, Easter, and in June, and is used as an aid in the class work but is not limited to the English classes.

Student Activities

That the student may make profitable and worthy use of their leisure time a number of literary, musical and athletic organizations are encouraged and sponsored by the College. Among others are the following: Literary Societies, Orchestra, Glee Club, Chorus and Cadet Corps, Band and athletic organizations. Only students having satisfactory scholastic standing are permitted to represent the College in these organizations.

Eligibility Rules

An Eligibility Committee composed of several members of the staff passes on the eligibility of those students who wish to take part in the athletic and musical organizations of the College. A student's eligibility depends on his general behaviour, industry, and success in his studies.

Admission and Registration

Registration days will be observed on September 18th and 19th.

Applicants for admission must submit to the Principal testimonials of good moral character from a Lutheran pastor, together with the latest reports concerning their scholarship. *Students from other schools must furnish certificates of scholarship and honorable dismissal.* Applications for admission for the next scholastic year should be made as early as possible, personally or by letter, to the Principal. Every application must also include a deposit of \$5.00. In event of cancellation after September 10th this deposit will be forfeited, otherwise this amount is credited upon the first term account.

Each pupil's records from other schools must be presented before he can be admitted, as his classification depends upon these records. All classifications are subject to change after the first month.

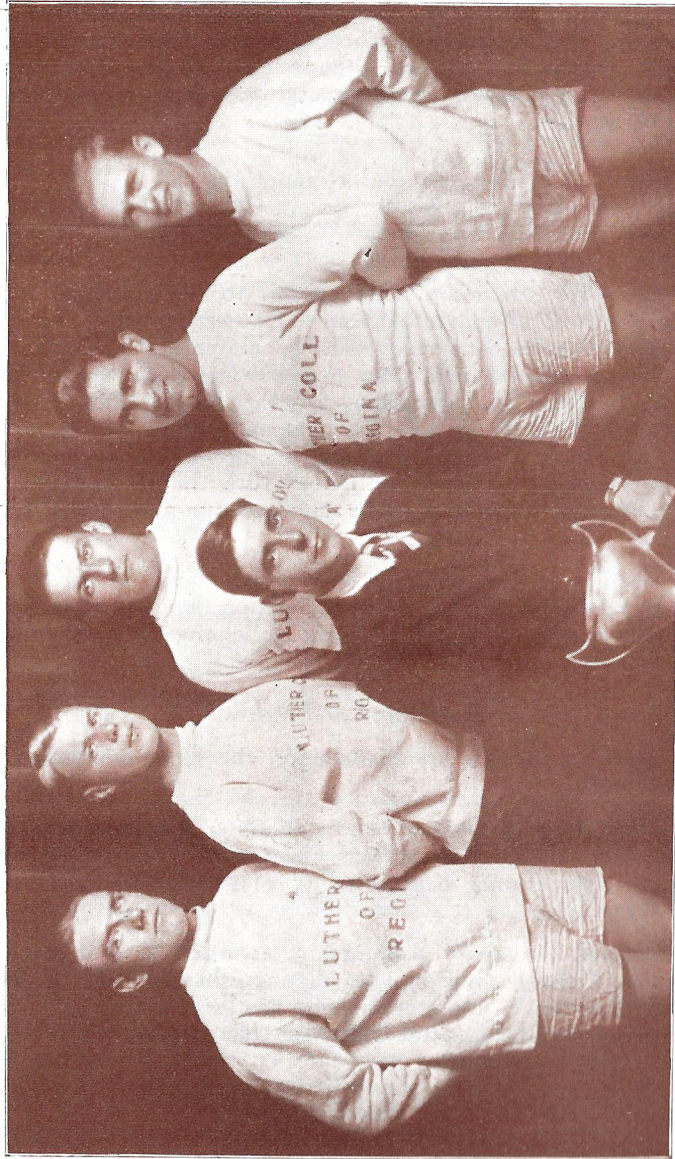
Scholarships and Prizes

The following awards are made upon the recommendation of the College Staff:

The University of Saskatchewan offers a scholarship to be credited on the tuition fees at the University. This award is based on the educational achievements of a student of Luther College.

The Capital University Scholarship, awarded to that student of the Junior College division who distinguishes himself (or herself) in academic work. No student who has less than a "B" average will be considered. Capital University has created this scholarship.

The Luther College Board of Trustees awards a \$20.00 scholarship for educational achievement to a twelfth year student, which is credited on the tuition fees upon entering the Second Year Arts course, at Luther College.



COLLEGE TRACK TEAM
 Won Senior Track Championship of Saskatchewan at the University of Saskatchewan, May 30 and 31, 1930

The Principal offers a gold medal to the student who shows the greatest general proficiency in school work and extra-curricular activities.

The O. Fuhrmann award is a cash prize and is received by the student who is in need of financial assistance and who shows superior ability and diligence in school work.

The German-Canadian Association of Saskatchewan donates a \$5.00 cash prize yearly to the student excelling in the study of German.

The Classics Award given by Prof. H. Schmidt to the second Year Arts student who excels in the study of Latin.

The Mrs. O. Fuhrmann prize is awarded the girl who displays the greatest diligence in the pursuit of music throughout the year.

The Dean of Women, Emilie Walter, offers a prize to each of the occupants of the room in the girls' dormitory which is kept the neatest and cleanest throughout the year.

The Dr. E. K. Sauer Memorial Award in memory of his mother.

The O. Falk Memorial Award to the occupants of the room in the boys' dormitory which is kept neatest and cleanest during the school year.

Athletic Director's Award to the best all-round athlete.

Athletic awards in the form of College numerals and letters are given to boys and girls excelling in different phases of inter-scholastic sports and gym work.

ACADEMIC DEPARTMENT

Tuition Rates

(a) For students from the Congregations of American Lutheran Church.	
Tuition fee per year, high school.....	\$ 45.00
Tuition per year, 2nd Year University.....	50.00
Room rent per year.....	45.00
Board per week \$4.00, 37½ weeks.....	150.00
(b) All other students.	
Tuition fee per year, high school.....	\$ 60.00
Tuition per year, 2nd Year University.....	65.00
Room rent per year.....	65.00
Board per week \$4.00, 37½ weeks.....	150.00

Fees

An Activity Fee of \$5.00 is charged each resident student, non-resident student, \$4.00.

The Chemistry Department charges a laboratory fee of \$5.00 a year.

Laboratory fee for Physics 1B, \$3.00.

High school physics and biology laboratory fees are each \$2.50 per year.

A Caution Money Fee is collected by the Treasurer from all resident students, which amount is returned to the student at the end of the year if there are no charges against the student for breakage or damage done to school property.

Physical examination fee of \$1.00. The examination is given to each pupil at the beginning of each school year by the school physician.

One-third of the year's account is to be paid on entering, the second third of the year's account to be paid December 1st, and the final third to be paid March 1st.

The other method of payment which may be followed is the monthly payment plan. According to this plan on the day of entering \$50 are paid and on the first day of each month thereafter \$40 are to be paid until the year's account has been met. According to this plan the year's account will be paid in approximately seven months.

For prompt payment on the days designated above, namely: 1st day of school, December 1 and March 1, a 5% discount will be allowed.

In event of expulsion from the College the student forfeits his or her fees for that semester.

The College reserves the right to increase the rate for board if it is found necessary.

For the nominal fee of \$6.00 the College will supply students with bed linen, pillows and blankets for the school year. Students may furnish their own bed clothing.

Non-Resident or Day Students

Students who do not live in residence are charged the tuition fee as stated in the above schedule. Those students who wish to have some of their meals in the dining room are charged a very nominal amount. No charge is made for room rent.

MUSIC FEES

Beginners.....	\$1.00 per lesson
Non-beginners.....	\$1.25 per lesson
Class instruction, for beginners only.....	Special rates
Elementary Theory (per school year).....	\$10.00
Intermediate and Advanced Theory (per school year).....	\$15.00
Piano Rent (per school year).....	\$10.00

Regulations

All fees are payable in advance.

The fees are not payable by the lesson but by the term, namely: ten lessons.

Theory is required of every pupil.

Pupils will not be enrolled for a shorter period than to the end of the term in which they register.

Lessons missed are charged for unless reasonable notice is given the teacher.

Regular pupils are required to play at monthly recitals once every two months.





WINNERS OF THE STRATHCONA CUP, 1933
CADET RIFLE TEAM, CHAMPIONS OF SASKATCHEWAN

Die Anstalt

Luther College liegt auf einem 21 Acker grossen Platze an der Ecke von Royal Str. und Dewdney Ave. Oestlich davon befindet sich die Wohnung des Vize-Gouverneurs von Saskatchewan, eben westlich ist die Kaserne der "Royal Canadian Mounted Police."

Auf dem von schönen Bäumen umsäumten Platze hebt sich das grosse dreistöckige Gebäude mit seiner vornehmen Einfachheit prächtig ab. Da es von Beton (reinforced concrete) und Backsteinen erbaut ist, ist es feuersicher und bietet den 125 Schülern, die es aufnehmen kann, eine angenehme Wohnung. Durch Zwischenwände ist es in zwei Teile geteilt, von denen der grössere für junge Männer bestimmt ist. Der kleinere Teil bietet Raum für etwa 38 Mädchen und die Lehrerin, unter deren Aufsicht sie stehen.

Im ersten Stock befindet sich neben dem Eingange das Geschäftszimmer des Directors. Hier ist der geräumige Andachts- und Versammlungssaal, fünf Klassenzimmer und die Bibliothek. Das "science room" steht mit seiner Einrichtung auf der Höhe der Zeit. Im Erdgeschoss ist die Küche mit den nötigen Nebenzimmern, ein grosser Eszsaal und andere Räumlichkeiten. Die Dampfheizung

befindet sich in einem Kellerraum, der sich hinten an das Gebäude anschliesst. Dieses ist mit allen modernen Bequemlichkeiten versehen.

Der Lehrplan

Die Anstalt will ihre Schüler auf einen höheren Beruf vorbereiten. Da es eine kirchliche Anstalt ist, soll sie vor allem junge Männer fürs Predigtamt vorbereiten. Da nun in den ersten Jahren, die Ausbildung für die verschiedenen Berufe durchweg dieseble ist, so wird Gelegenheit geboten, sich für das Lehramt an öffentlichen Schulen und für den Besuch der Universität vorzubereiten. Wer Arzt, Advokat usw. werden möchte, kann die nötige Vorbildung hier bekommen. Mit dem hinzugekommenen fünften Jahre wird es möglich, die beiden ersten Jahre der Universitäts-Arbeit im Luther College zu absolvieren. Hierdurch wird der Einfluss christlicher Lehrer auf das Gemüt der jungen Leute verlängert.

Der Kursus entspricht den Anforderungen des "Department of Education," so dass die Schüler imstande sind, die Prüfungen desselben zu bestehen und in die staatlichen Lehrerseminare ("Normal Schools") einzutreten, um sich für den Leherberuf vorzubereiten, oder die Universität zu beziehen. Die Anstalt ist von einem "Inspector of High Schools" inspiziert worden und hat von ihm ein gutes Zeugnis bekommen. Besonderes Gewicht wird auf die englische und deutsche Sprache gelegt. Das letztere ist für die deutsche Bevölkerung des Westens von grosser Wichtigkeit. Der Unterricht im Deutschen zieht sich durch alle Jahre des Lehrplans hindurch.

Da die Anstalt ausgeprägt christlichen Charakter trägt, wird in allen Klassen Religionsunterricht erteilt. Den Studenten, die sich auf das Predigtamt vorbereiten, wird der Unterricht auch in deutscher Sprache erteilt; in den übrigen Klassen in der englischen Sprache. Dieser Unterricht ist nicht der einzige Vorteil, den die Anstalt ihren Schülern bietet, und weshalb sie den Vorzug vor den höheren Schulen des Staates verdient. Der Einfluss christlicher Lehrer auf ihre Schüler ist gewiss nicht zu unterschätzen. Dazu kommt, dass der ganze Unterricht von den Anschauungen des Christentums beherrscht wird.

Ein Ueberblick über den Lehrplan ist an anderer Stelle gegeben.

Preise

Es werden verschiedene Preise für hervorragende Leistungen geboten. Es sind die folgenden:

(1) Von der Universität Saskatchewan, ist der Anstalt das Vorrecht erteilt worden, jährlich einen ihrer Schüler für ein freies "Scholarship" zu ernennen. Dem Inhaber dieses Preises werden auf der Universität jährlich \$30.00 von seinen Gebühren erlassen.

(2) Der Otto Fuhrmann Preis, für einen dürftigen Studenten, der sich durch Fleiss und tüchtige Leistungen auszeichnet.

(3) Der Frau Otto Fuhrmann Preis, im Werte von \$10.00, dem Mädchen, welches den grössten Fleiss im Musikstudium zeigt.

(4) Der Preis des Deutsch-Canadischen Verbandes, \$5.00, dem Studenten, der sich im Studium der deutschen Sprache auszeichnet.

(5) Der Luther College Preis. Dem Glied des XII. Grades, welches die beste Arbeit getan, werden von den Gebühren des folgenden Jahres \$20.00 erlassen.

(6) Dem Studenten, der sich während etlicher Jahre in verschiedenen Hinsichten ausgezeichnet hat, wird vom Direktor eine goldene Medaille geschenkt.

(7) Den Mädchen, die ihr Zimmer am saubersten halten, wird von Frä. Walter jährlich ein Geschenk gegeben.

(8) Der Dr. E. K. Sauer Preis, gestiftet zum Andenken seiner Mutter.

(9) Eine Medaille für den Schüler der zweiten Universitäts-Klasse, der sich in Latein auszeichnet, von Professor H. Schmidt.

(10) Der Otto Falk Gedächtnispreis für die jungen Männer, die während des Schuljahres ihr Zimmer am saubersten halten.

(11) Die Capital University Scholarship für den Schüler der Universitäts-Klasse, der sich in seinen Studien auszeichnet. In betracht kommen nur Schüler, die wenigstens einen "B" Durchschnitt erlangen, von Capital University, Columbus, Ohio.

Wohnung

Das Gebäude bietet Raum für 125 Schüler, 87 an der Knabenseite und 38 auf der Mädchenseite. Auswärtige Studenten wohnen in der Regel im Gebäude. Alle Schüler müssen sich der Hausordnung fügen. Die Zimmer sind für zwei und drei Schüler bestimmt. Sie enthalten Betten, Stühle, Tische und Bücherbrett, Schränke und Studierlampen. Bettzeug und Handtücher liefert jeder Schüler selbst. Beschädigung des Anstaltseigentums muss ersetzt werden.

Aufnahme

Wer Aufnahme in die Anstalt begehrt, wende sich an den Direktor, Professor R. H. Schneider, Luther College, Regina, Sask., der alle Gesuche gern berücksichtigen wird. Man wolle ein Sittenzeugnis von einem luth. Pastor und seine letzten Schulzeugnisse, resp. Diplom der provinziellen Schulbehörden unterbreiten. Schüler anderer Anstalten sind ausserdem gehalten, eine ehrenvolle Entlassung vorzulegen. Man melde sich sobald als möglich an, persönlich oder brieflich. Mit jedem Aufnahmegesuch sind \$5.00 zu hinterlegen, die als Anzahlung für den ersten Termin angesehen werden. Wer sein Aufnahmegesuch nach dem 10. September zurückzieht, verliert das so hinterlegte Geld.

Kosten des Studiums

(a) Für Studenten aus Gemeinden der amerikanisch-lutherischen Kirche:

Lehrgeld für ein Jahr in Hochschule.....	\$ 45.00
Lehrgeld für das 2. Universitätsjahr.....	50.00
Wohnung für ein Jahr.....	45.00
Kostgeld, \$4 die Woche, 37½ Wochen.....	150.00

(b) Für Andere:

Lehrgeld für ein Jahr in Hochschule.....	\$ 60.00
Lehrgeld für das 2. Universitätsjahr.....	65.00
Wohnung für ein Jahr.....	65.00
Kostgeld, \$4 die Woche, 37½ Wochen.....	150.00

(c) Extra-Gebühren für verschiedene Klassen:

Physik.....	\$ 2.50
Chemie.....	5.00
Biologie.....	2.50

Studenten aus Gemeinden der amerikanisch-lutherischen Kirche müssen einen Brief von ihrem Pastor bringen, der ihre Mitgliedschaft in unserer Synode, bezeugt.

Schüler, die in der Anstalt wohnen, zahlen \$5.00 pro Jahr für die verschiedenen gesellschaftlichen und athletischen Veranstaltungen. Auswärts wohnende Schüler zahlen \$4.00.

Kost wird Esszimmer der Anstalt zu \$4.00 die Woche geboten. Da nur die tatsächlichen Auslagen berechnet werden, ist es möglich, die Kost zu mässigem Preise zu liefern. Doch behält sich die Anstalt das Recht vor, wenn nötig, das Kostgeld zu erhöhen.

Alle Schüler, die im Gebäude wohnen, müssen \$5.00 Kautions hinterlegen. Dies Geld wird am Schluss des Jahres zurückgezahlt, wenn das Anstaltseigentum nicht beschädigt ist. Jeder Schüler ist verantwortlich für irgendwelchen Schaden in seinem Zimmer, ausser er hat dem Direktor mitgeteilt, wenn der Schaden durch andere entstanden ist. Wir ersuchen die Eltern nach Schulschluss ihre Kinder nach dem Kautionsgelde zu fragen.

Die Gebühren werden folgendermassen bezahlt: Ein Drittel der Gesamtgebühren müssen beim Eintritt des Studenten entrichtet werden; das zweite Drittel am 1. Dezember, und das letzte Drittel am 1. März.

Ein anderer Plan ist wie folgt: Beim Eintritt werden \$50.00 bezahlt, und am ersten jedes folgenden Monats werden \$40.00 bezahlt, bis die Gesamtsumme bezahlt ist. Nach diesem Plan werden die Gebühren für das ganze Jahr in ungefähr sieben Monaten entrichtet.

Für prompte Entrichtung des Geldes an den bezeichneten Daten wird ein Rabatt von 5% gegeben.

Einem Studenten, der disziplinarisch entlassen worden ist, werden die Gebühren für das betreffende Semester nicht zurückerstattet.

Zweimal täglich finden Andachten in der Anstalt statt wie es sich in einem christlichen Hause gebührt. Die Morgenandachten werden in englischer, die Abendandachten in deutscher Sprache gehalten. Von Andachten werden Studenten nur entschuldigt, wenn sie eine der Sprachen nicht verstehen.

Alle Schüler sind gehalten, am Religionsunterricht teilzunehmen.

Vereine

Die deutsche literarische Gesellschaft bietet den Schülern besondere Uebung im Gebrauch der deutschen Sprache, wie auch Sicherheit im öffentlichen Auftreten.

Die athletische Gesellschaft gibt den Schülern Gelegenheit zu körperlichen Uebungen. Gespielt werden, Baseball, Fussball, Basket-Ball, Tennis, usw. Derartige körperliche Uebungen helfen, dem Körper seine Gesundheit zu erhalten.

Alle Schüler sind ferner gehalten, an gewissen Turnübungen teilzunehmen, es sei denn, dass sie auf Verlangen der Eltern vom Direktor entschuldigt sind. Es werden Vorkehrungen getroffen, dass die Turnsäle und die Schwimmschultheiche der Y.M.C.A. den Schülern zugänglich sind. Die Turn- und Schwimmübungen stehen unter der Leitung eines tüchtigen Lehrers.

Prüfungen

In allen Klassen finden häufige Repetitionen und Prüfungen statt. Die Fortschritte der Schüler werden genau notiert. Fünfmal im Jahre wird den Eltern ein Zeugnis zugesandt. Ferner nehmen die Schüler in der Regel an den Prüfungen des Staates teil, wodurch ihre Arbeit staatliche Anerkennung erhält. Schüler, die ihre Klassen des öfteren versäumen, werden gemassregelt.



NORTH CORRIDOR

DID YOU KNOW THAT—

—the academic enrollment increased 22% in 1932-33, compared to 1931-32?

—seventeen Second Year University students received the Associate in Arts certificate from the University of Saskatchewan, in May, 1933?

—Alberta, Manitoba, British Columbia and United States were represented in the academic enrollment?

—six institutions of higher learning are represented in the college faculty?

—the Rifle Team of the Cadet Corps won the Strathcona Trophy as champions of Saskatchewan in 1933?

—the fees at Luther College are so reasonable because of the generous monthly grant for current expenses by the Church?

—the Carnegie Corporation is assisting in the building up of the College library?

1933-34